



STURDEE
RESIDENCES

EXPERIENCE NEW CITY LIVING

A NEW CITY LANDMARK HAS EMERGED

INSPIRED BY
A ZEST FOR CITY LIFE
SURROUNDED BY A RICH URBAN FABRIC
BRINGING SEAMLESS CONNECTIVITY
AND CONVENIENCE



THE 360 DEGREE AERIAL VIEW IS FOR ILLUSTRATION ONLY

REVEL IN THE MAGNIFICENT VIEW OF THE CITY

Sturdee Residences invites you to experience
a new dimension in city living from the comfort of your home.
Enjoy an arresting bird's eye view of the skyline, feel the vibrant energy of the city
and experience the city's transformation before your eyes.

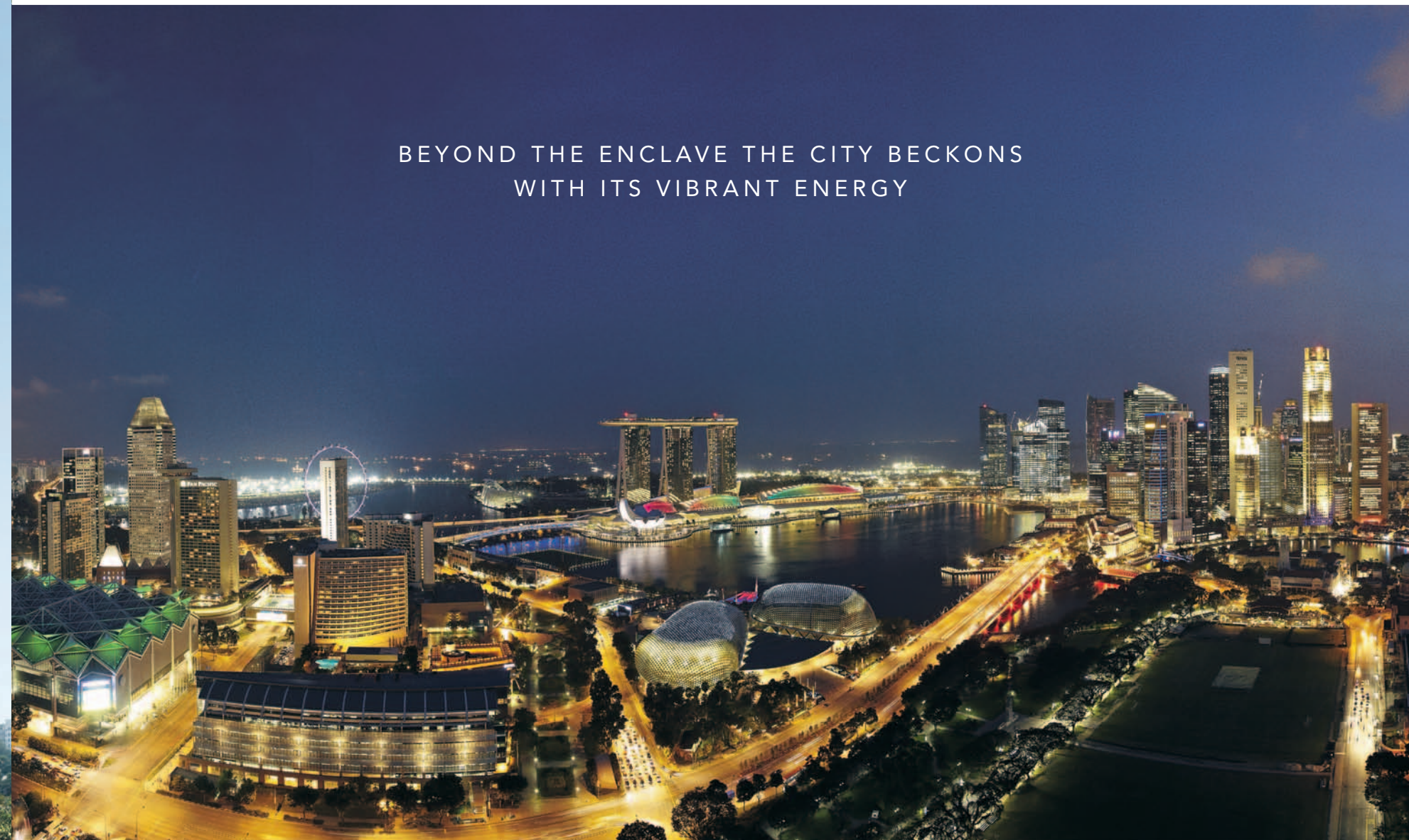




SURROUNDED BY CHARMING CONSERVATION SHOPHOUSES,
THIS NOSTALGIC NEIGHBOURHOOD IS STEEPED IN RICH HERITAGE



BEYOND THE ENCLAVE THE CITY BECKONS
WITH ITS VIBRANT ENERGY



IN THE HEART OF AN EVOLVING CITY DISTRICT OF THE FUTURE

JALAN BESAR / ROCHOR



LEGEND

Existing Developments

Park

Waterbody

Park Connectors / Cycling Routes

MRT

New Developments

Residential

Integrated Development

School

Park / Interim Park

Park Connectors / Cycling Routes

Healthcare Facility

Sports & Recreation

MRT

Road Improvement

Sturdee Residences is in the heart of a rejuvenated precinct that stretches from Jalan Besar to Kampong Glam, Ophir and Rochor, within the expanding city districts of Singapore. These areas have been earmarked by the Urban Redevelopment Authority of Singapore as key areas to be preserved for their historical value while being revitalised for the future.

Jalan Besar will undergo a transformation and emerge as an urbanized district while retaining the much loved and unique Kampong spirit right in the heart of Singapore. The Ophir-Rochor corridor will be a mixed-use district featuring offices, hotels and residences, connecting the established commercial node at Marina Centre to future developments along Rochor Canal and Bukit Timah Canal. In addition to injecting greater vibrancy into the city, an attractive feature will be generous greenery and landscaping that will enhance the uniqueness of this strategic city fringe area.

A photograph of the Rochor Canal in Singapore, showing a modern, landscaped waterway with a bridge and surrounding urban development.

A photograph of the Marina Reservoir in Singapore, showing a large body of water with a bridge and the city skyline in the background.

A photograph of a paved path in a park, showing a person walking and lush greenery on either side.

A photograph of the Supertrees at Gardens by the Bay in Singapore, showing tall, illuminated structures with green foliage.

The city's dynamic expansion will offer residents round-the-clock access to a host of lifestyle activities, from the active to the relaxing.

- 236 hectares of parks, promenades and public spaces.
- The Bay East and Bay Central Gardens at Gardens by the Bay.
- Expansive and abundant greenery along walkways, public spaces and sky parks.
- The transformation of Rochor Canal into a vibrant, clean and beautiful river with new recreational and community spaces along its banks.
- Extension of the waterfront promenade around Marina Reservoir.
- Water-based activities in Marina Reservoir, including water sports and river taxi rides.

Seamless connectivity is further enhanced with new MRT lines, expanded park connectors and alternative driving routes.

- The Downtown and Thomson MRT lines will feature 22 new stations and be ready as early as 2017, while the Downtown Line 3 Bendemeer MRT Station will open to connect the north-western and eastern regions of Singapore to the CBD and Marina Bay area.
- Comprehensive pedestrian networks will provide all-weather connectivity.
- New cycling paths along key routes will be available through the upgrading of existing park connectors integrating both the ABC Waters @ Kallang River (Upper Boon Keng) with HDB's Kallang Trivista.
- The completion of the North-South Expressway in 2020 provides shorter driving time across the island.

Source: <http://www.jbtc.org.sg>

FOR THE CONNECTED URBANITE



Central Business District



Singapore Sports Hub

EVERYTHING YOU NEED FOR WORK, REST & PLAY

CENTERED AROUND YOUR NEEDS

Nestled within a lush green enclave, scenic quiet lanes lead to major arterial roads and easy access to MRT stations. Expect all the modern conveniences to get you what you need and where you need to be, on foot, by train or car commute, in no time.



Orchard



Farrer Park MRT



City Square Mall



LASALLE College of the Arts



Connexion



Bugis



Kampong Glam



National Museum of Singapore



STURDEE
RESIDENCES



Minutes walk to

- City Square Mall
- Farrer Park MRT
- Connexion
- Bendemeer MRT (u/c)
- Jalan Besar Stadium
- Hong Wen Pri Sch



2 STOPS to
Dhoby Ghaut MRT
Interchange



3 STOPS to
City Hall MRT
Interchange

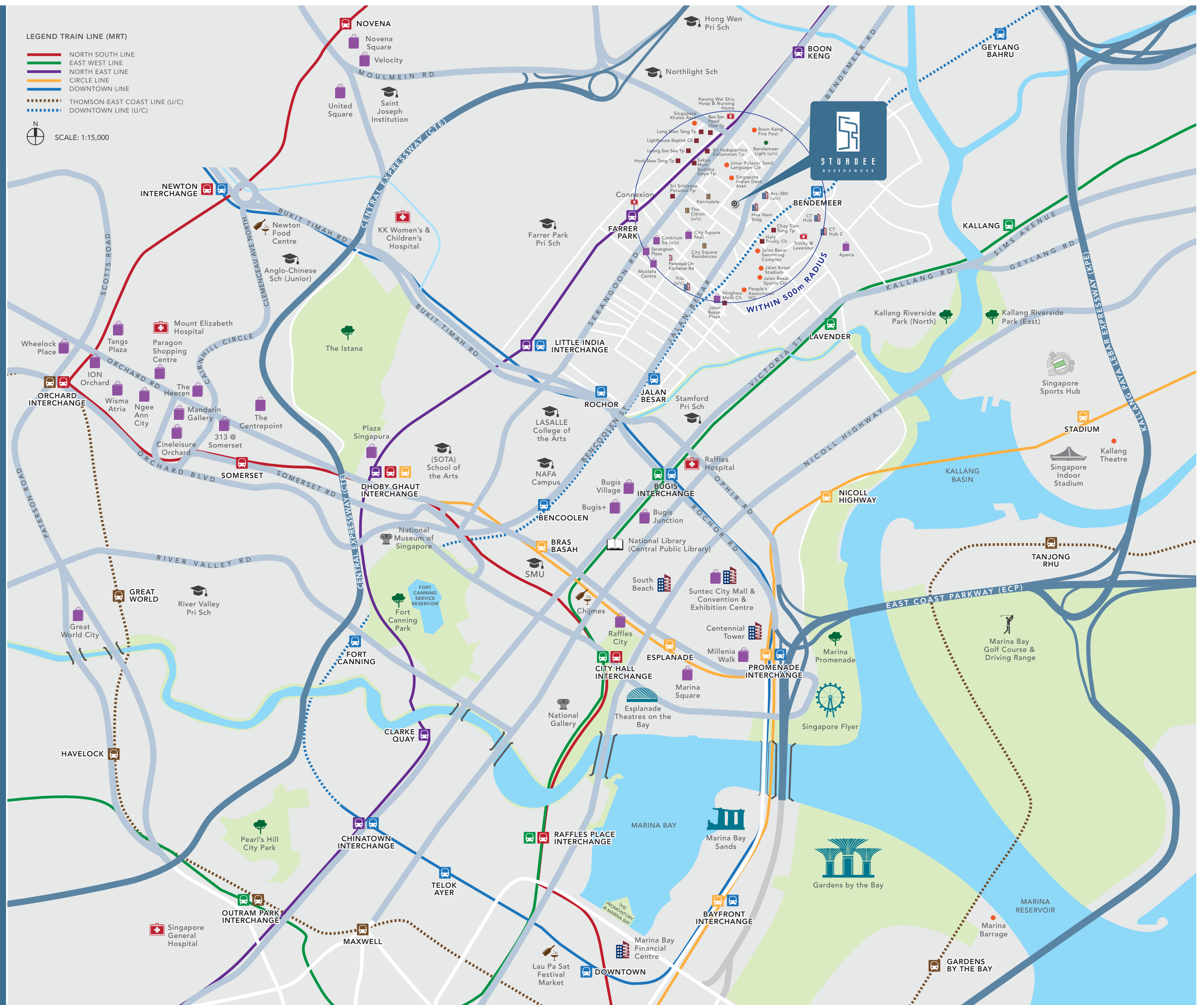


4 STOPS to
Orchard Shopping Belt / CBD



5 STOPS to
Marina Bay

Conveniently and strategically located in the centre of a new city transformation, Sturdee Residences is surrounded by an established network of connectivity and accessibility and will continue to evolve as the district expands in accordance with Singapore's urban master plans.



TRANQUILITY AMIDST THE CITY'S BUSTLE

Towering at 30 storeys high, 305 residential apartments offer breathtaking views of the city skyline. A tranquil and serene personal abode awaits, with the convenience, quaint charm and endless lifestyle choices at its doorstep.





ARTIST'S IMPRESSION

A DISTINCTIVE ENTRANCE
COMBINING SOOTHING WATER FEATURES AND
MANICURED GREENS PROVIDES THE PERFECT WELCOME
TO A CHIC URBAN RESIDENCE



ESCAPE TO YOUR PRIVATE TRANQUIL
OASIS ABOVE THE BUSTLING
METROPOLIS



ARTIST'S IMPRESSION



FEEL ENERGISED AS YOU WORK OUT EITHER
INDOOR OR OUTDOORS, ALL WHILE ENJOYING
A SPECTACULAR VIEW OF THE CITY



EXPERIENCE THE GOOD LIFE

A relaxing outdoor terrace on the 19th floor provides residents with additional space beyond the comforts of home for a quiet personal retreat or simply to soak in the city sights with that special someone.



IMPRESS AND INDULGE YOUR GUESTS
UNDER THE STARS

The open sky deck on the 29th floor is fully equipped to support the arrangement of private chefs and cocktail evenings. Treat your guests to a feast of culinary adventures, overlooking an impressive vantage of the city skyline.

LEVEL 29
SKY PARK

ARTIST'S IMPRESSION



THE PERFECT HOME FOR EVERYONE

Sturdee Residences fits the lifestyle needs of everyone, from the young urbanite to the cosy family. With a comprehensive host of facilities ranging from covered pavilions to a 50m lap pool and cross training fitness room, everything is in place for a healthy enriched lifestyle. Even the little ones can retreat to special activity corners that will keep them entertained for hours.



Basement 01

- 1 Guard House
- 2 Entrance Courtyard
- 3 Entrance Water Feature
- 4 Side Gate
- 5 Shared Bicycle Bay @ Basement
- 6 Management Office @ Basement
- 7 Bin Centre @ Basement
- 8 Substation @ Basement
- 9 Outdoor Generator Set

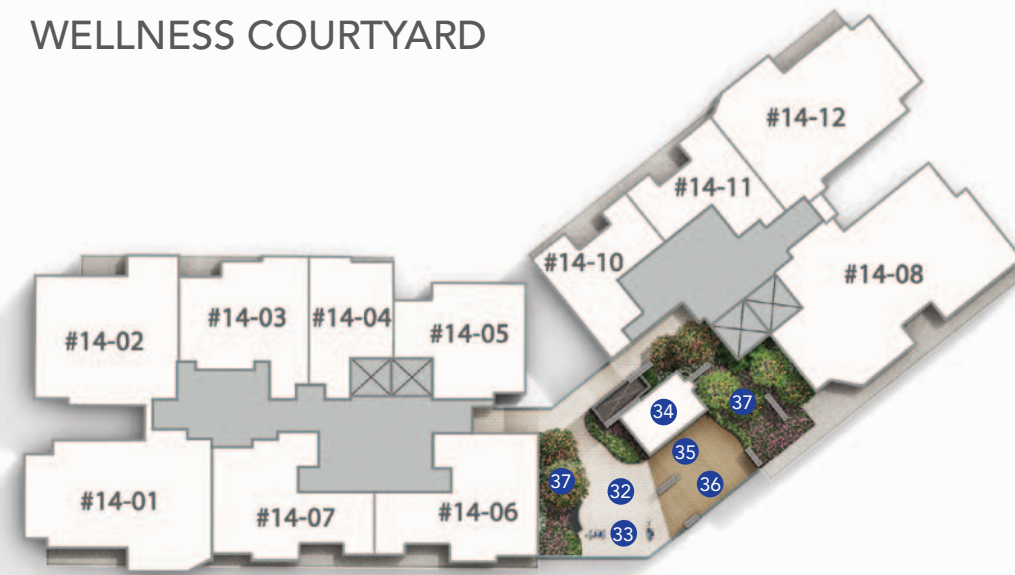
1st Storey

- 10 Children's Play Zone
- 11 Dining Deck
- 12 Barbeque Pavilion
- 13 Spice Garden
- 14 Outdoor Shower
- 15 Relaxing Corner
- 16 Wading and Fun Pool
- 17 Street Soccer Court (Non-standard)
- 18 Basketball Court (Half Court)
- 19 Butterfly Garden
- 20 Teppanyaki Pavilion
- 21 Grill Pavilion
- 22 Sun Deck
- 23 Jacuzzi
- 24 Infinity Lap Pool (approx. 50m in length)
- 25 Communal Lounge
- 26 Reading Corner
- 27 Foot Reflexology Trail
- 28 Lush Landscape Garden
- 29 Changing Room
- 30 Seating Corner
- 31 Multi-Purpose Room

2nd Storey

- 31 Multi-Purpose Room

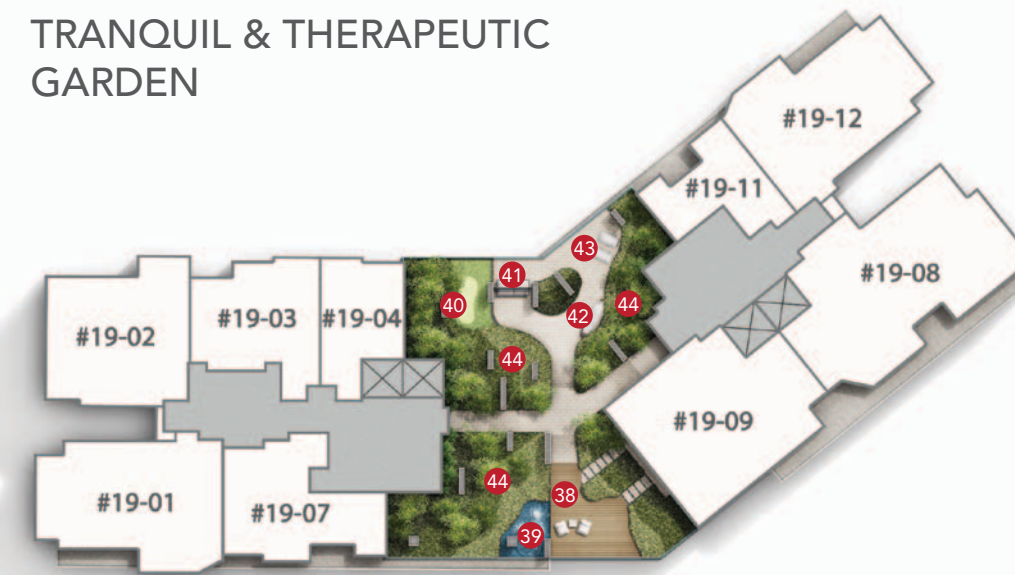
WELLNESS COURTYARD



LEVEL 14

- 32 Aerobic and Wellness Plaza
- 33 Outdoor Fitness Alcove
- 34 Indoor Gymnasium
- 35 Yoga Deck
- 36 TRX Exercise Corner
- 37 Aromatic Landscape Garden

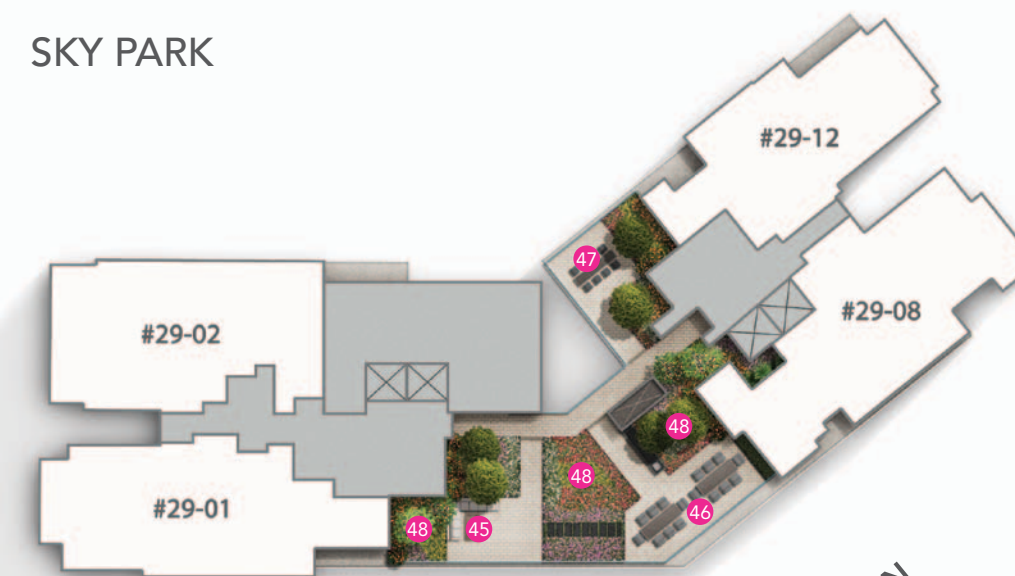
TRANQUIL & THERAPEUTIC GARDEN



LEVEL 19

- 38 Leisure Deck
- 39 Reflective Pool
- 40 Putting Green
- 41 Cozy Corner with Swing Bench
- 42 Hammock Corner
- 43 Seating Alcove
- 44 Evergreen Landscape Garden

SKY PARK



LEVEL 29

- 45 Private Sky Lounge
- 46 Private Sky Dining
- 47 Private Sky Bar
- 48 Abloom Landscape Garden



2-BEDROOM
Living / Dining Room

IMPRESSION ONLY

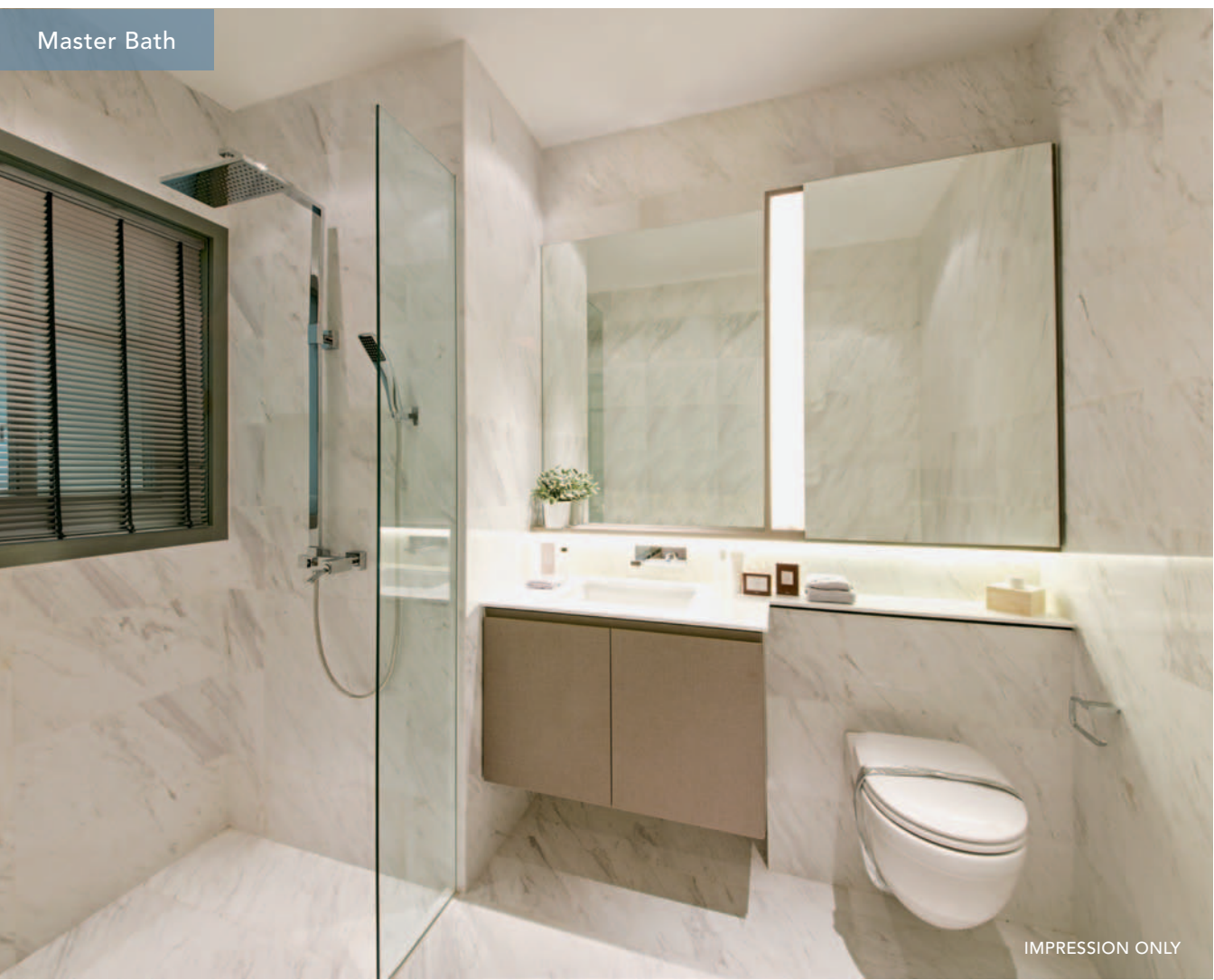
YOUR HOME,
AN EXTENSION OF THE
CITYSCAPE

305 units comprising 1-, 2-, 3-, 4-bedroom apartments and penthouses have been designed with modernity and innovation in mind, through the effective use of floor-to-ceiling windows and open plan layouts. Flanked by views of the skyline and equipped with quality finishes and fittings, this is truly an urban oasis at its best.

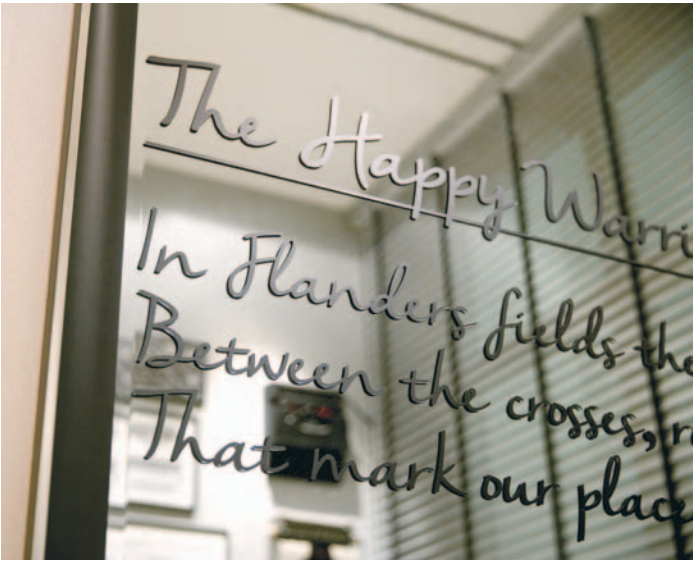
Master Bedroom



Master Bath



Bedroom 2





4-BEDROOM
Living / Dining Room

IMPRESSION ONLY



LUXURIOUS URBAN LIVING

For the house-proud city dweller,
stylish and modern interiors that reflect
your exceptional taste.





Master Bedroom

IMPRESSION ONLY

Junior Master Bedroom



Bedroom 3



Yard/Utility



IMPRESSION ONLY



Kitchen



IMPRESSION ONLY

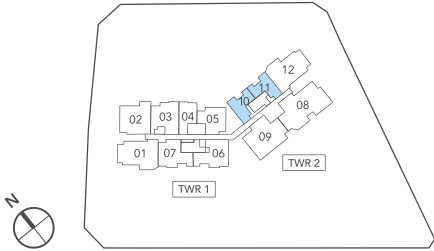
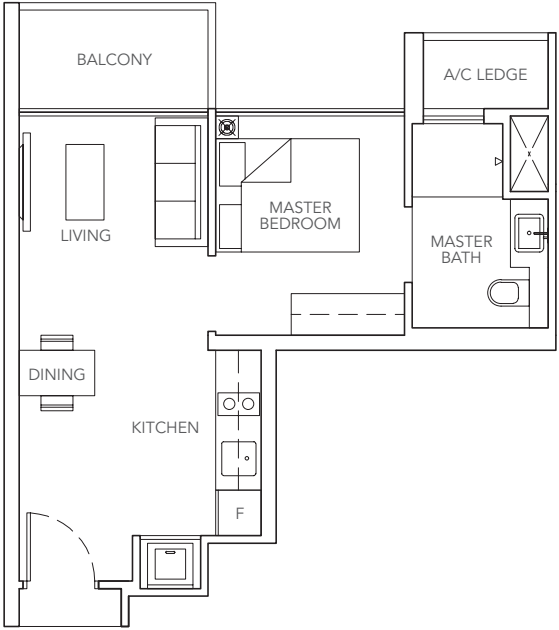
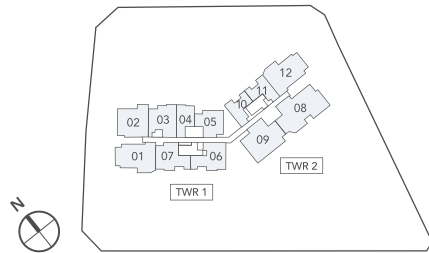
PENTHOUSES					
TOWER 1			SKY PARK	TOWER 2	
STOREY / UNIT NO.	01	02		08	12
30	PH2	PH3		PH4	PH1
29	PH2	PH3		PH4	PH1

TOWER 1							
STOREY / UNIT NO.	01	02	03	04	05	06	07
28	C2	C1	B3	A2	B1	B2a	B2
27	C2	C1	B3	A2	B1	B2a	B2
26	C2	C1	B3	A2	B1	B2a	B2
25	C2	C1	B3	A2	B1	B2a	B2
24	C2	C1	B3	A2	B1	B2a	B2
23	C2	C1	B3	A2	B1	B2a	B2
22	C2	C1	B3	A2	B1	TRANQUIL & THERAPEUTIC GARDEN	B2
21	C2	C1	B3	A2	TRANQUIL & THERAPEUTIC GARDEN		B2
20	C2	C1	B3	A2			B2
19	C2	C1	B3	A2			B2
18	C2	C1	B3	A2	B1	B2a	B2
17	C2	C1	B3	A2	B1	B2a	B2
16	C2	C1	B3	A2	B1	B2a	B2
15	C2	C1	B3	A2	B1	B2a	B2
14	C2	C1	B3	A2	B1	B2a	B2
13	C2	C1	B3	A2	B1	B2a	B2
12	C2	C1	B3	A2	B1	B2a	B2
11	C2	C1	B3	A2	B1	B2a	B2
10	C2	C1	B3	A2	B1	B2a	B2
9	C2	C1	B3	A2	B1	B2a	B2
8	C2	C1	B3	A2	B1	B2a	B2
7	C2	C1	B3	A2	B1	B2a	B2
6	C2	C1	B3	A2	B1	B2a	B2
5	C2	C1	B3	A2	B1	B2a	B2
4	C2	C1	B3	A2	B1	B2a	B2
3	C2	C1	B3	A2	B1	B2a	B2
2	Recreational Facilities Deck						
1							

TOWER 2					
STOREY / UNIT NO.	08	09	10	11	12
28	D1	C3	A1	A1	C2
27	D1	C3	A1	A1	C2
26	D1	C3	A1	A1	C2
25	D1	C3	A1	A1	C2
24	D1	C3	A1	A1	C2
23	D1	C3	A1	A1	C2
22	D1	C3	A1	A1	C2
21	D1	C3	TRANQUIL & THERAPEUTIC GARDEN	A1	C2
20	D1	C3		A1	C2
19	D1	C3a		A1	C2
18	D1	WELLNESS COURTYARD	A1	A1	C2
17	D1		A1	A1	C2
16	D1		A1	A1	C2
15	D1		A1	A1	C2
14	D1		A1	A1	C2
13	D1	C3	A1	A1	C2
12	D1	C3	A1	A1	C2
11	D1	C3	A1	A1	C2
10	D1	C3	A1	A1	C2
9	D1	C3	A1	A1	C2
8	D1	C3	A1	A1	C2
7	D1	C3	A1	A1	C2
6	D1	C3	A1	A1	C2
5	D1	C3	A1	A1	C2
4	D1	C3	A1	A1	C2
3	D1	C3	A1	A1	C2
2	Multi-Purpose Room				
1	Recreational Facilities Deck				

LEGEND

- 1-Bedroom
- 2-Bedroom
- 2+1-Bedroom
- 3-Bedroom
- 4-Bedroom
- Penthouse



A1

1-BEDROOM

39 sq m / 420 sq ft

#03-10 to #18-10

#22-10 to #28-10

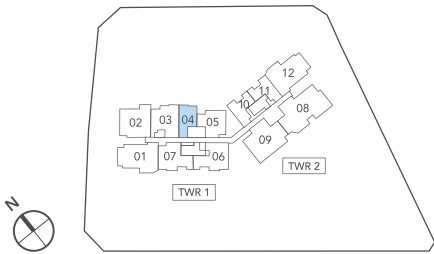
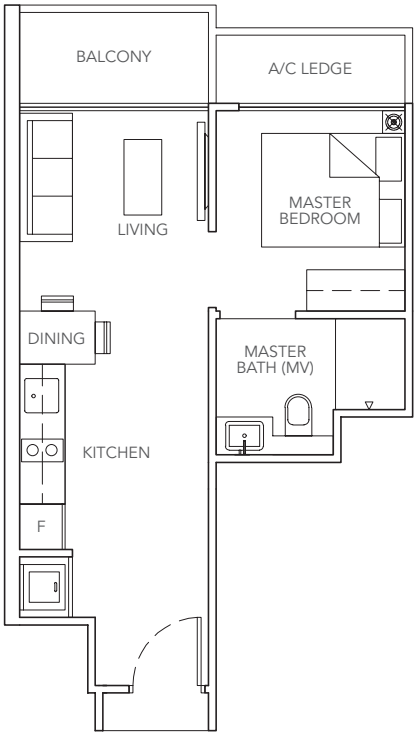
#03-11 to #28-11 (mirror)

A2

1-BEDROOM

39 sq m / 420 sq ft

#03-04 to #28-04



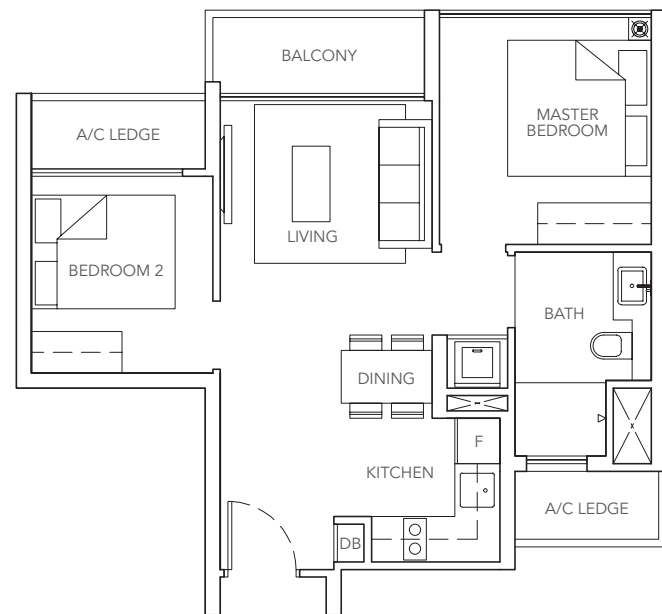
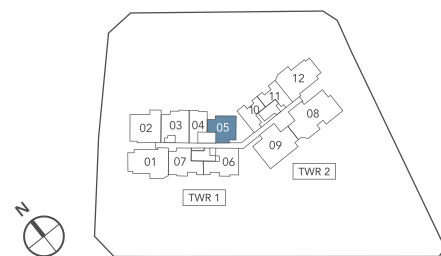
B1

2-BEDROOM

53 sq m / 570 sq ft

#03-05 to #18-05

#22-05 to #28-05



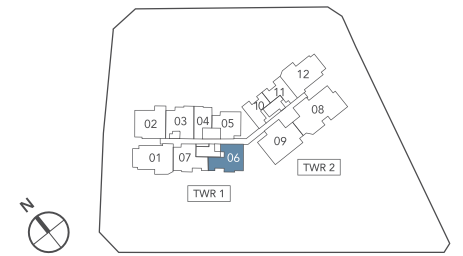
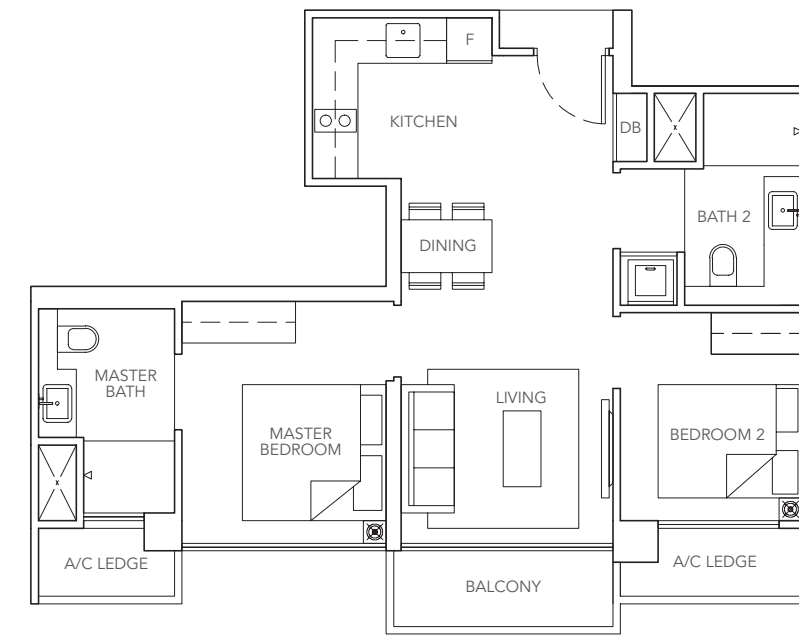
B2a

2-BEDROOM

61 sq m / 657 sq ft

#03-06 to #18-06

#23-06 to #28-06

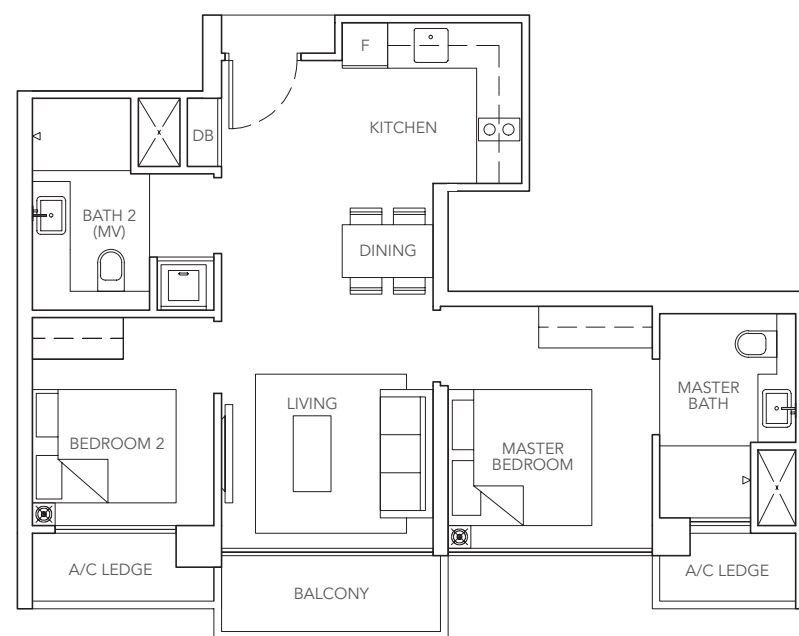
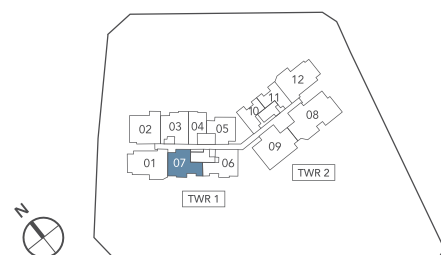


B2

2-BEDROOM

61 sq m / 657 sq ft

#03-07 to #28-07

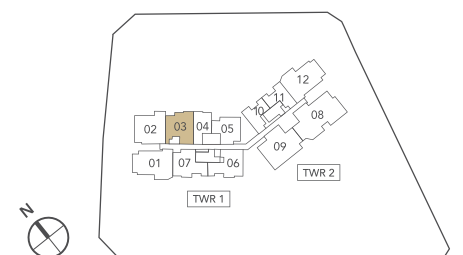


B3

2+1-BEDROOM

67 sq m / 721 sq ft

#03-03 to #28-03



Area includes A/C ledge, balcony and void (where applicable). Some units are mirror images of the apartment plans shown in the brochure. Please refer to the key plans for orientation. The plans are subject to change as may be approved by the relevant authorities. All floor areas are approximate measurements only and are subject to government resurvey.

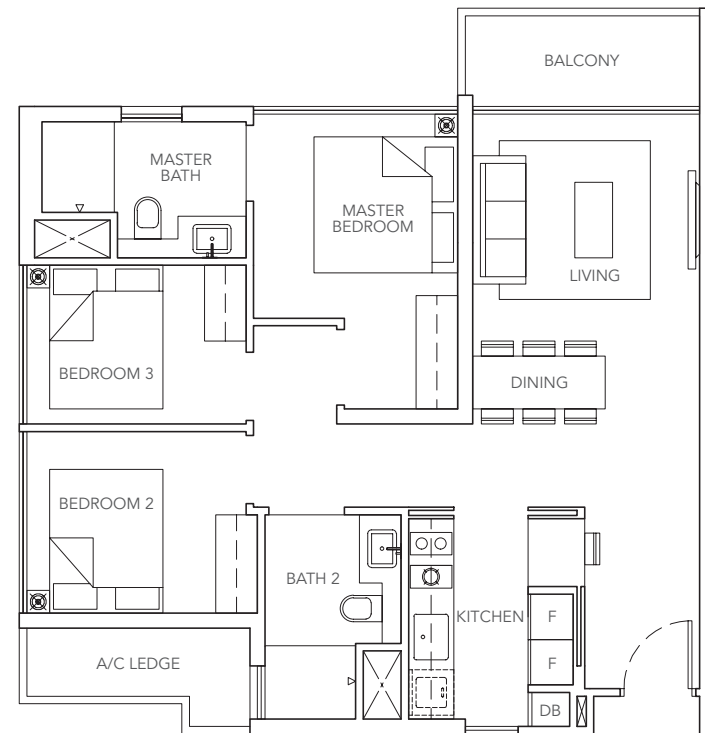
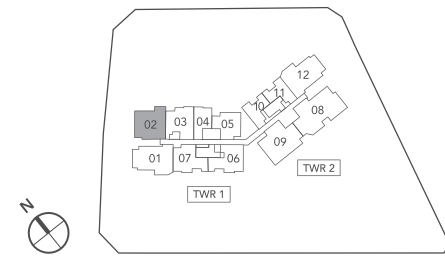
Area includes A/C ledge, balcony and void (where applicable). Some units are mirror images of the apartment plans shown in the brochure. Please refer to the key plans for orientation. The plans are subject to change as may be approved by the relevant authorities. All floor areas are approximate measurements only and are subject to government resurvey.

C1

3-BEDROOM

77 sq m / 829 sq ft

#03-02 to #28-02

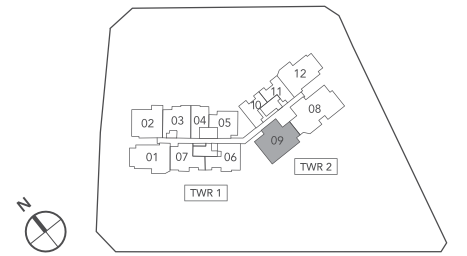
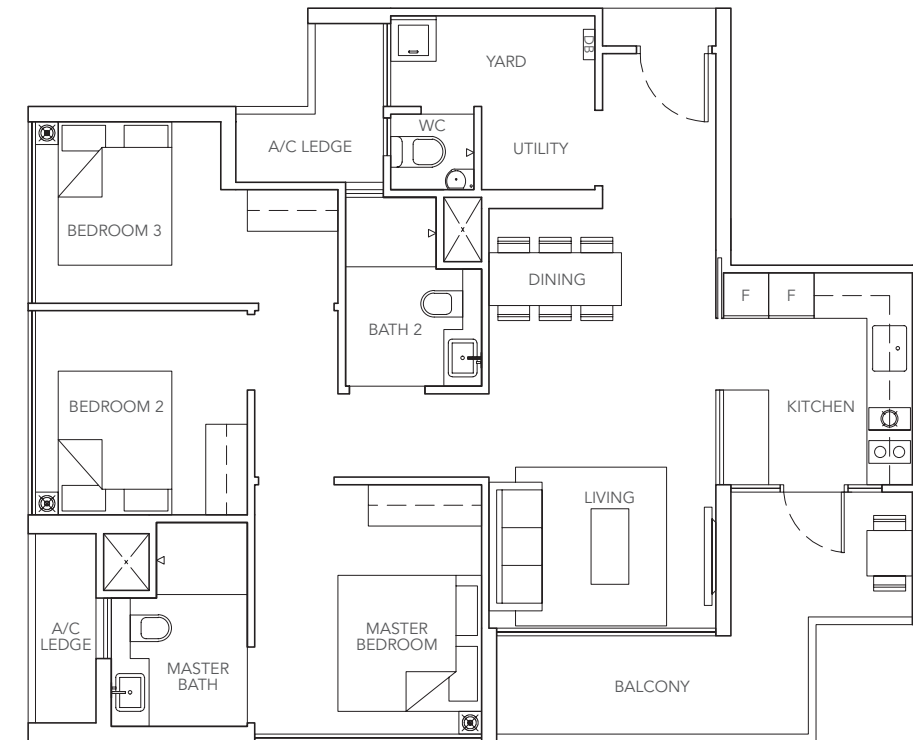


C3

3-BEDROOM

97 sq m / 1044 sq ft

#03-09 to #13-09
#20-09 to #28-09

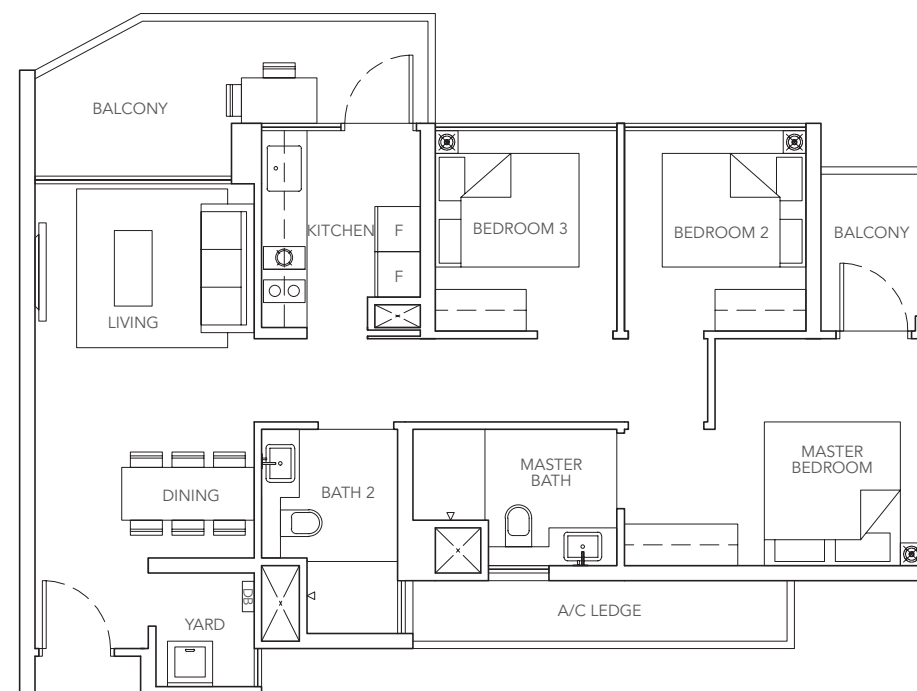
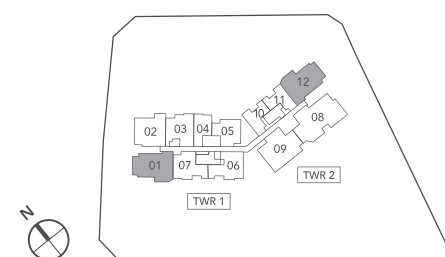


C2

3-BEDROOM

88 sq m / 947 sqft

#03-01 to #28-01
#03-12 to #28-12

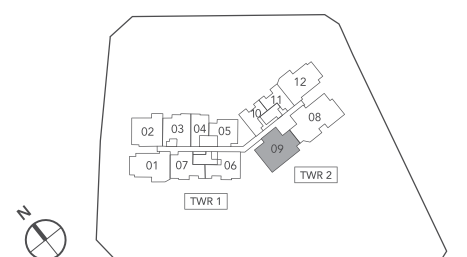
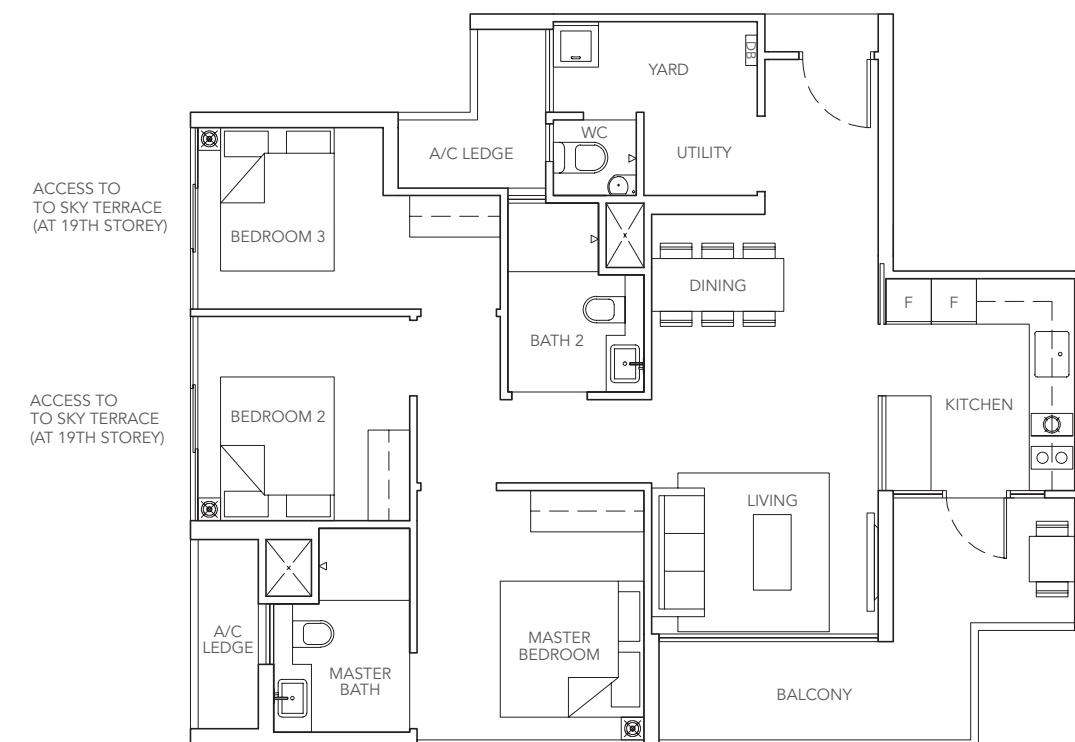


C3a

3-BEDROOM

96 sq m / 1033 sq ft

#19-09



Area includes A/C ledge, balcony and void (where applicable). Some units are mirror images of the apartment plans shown in the brochure. Please refer to the key plans for orientation.
The plans are subject to change as may be approved by the relevant authorities. All floor areas are approximate measurements only and are subject to government resurvey.

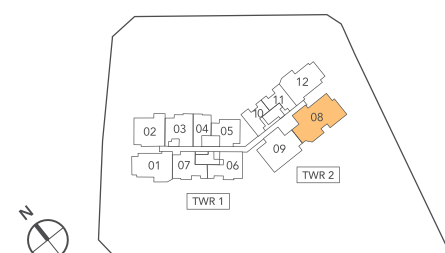
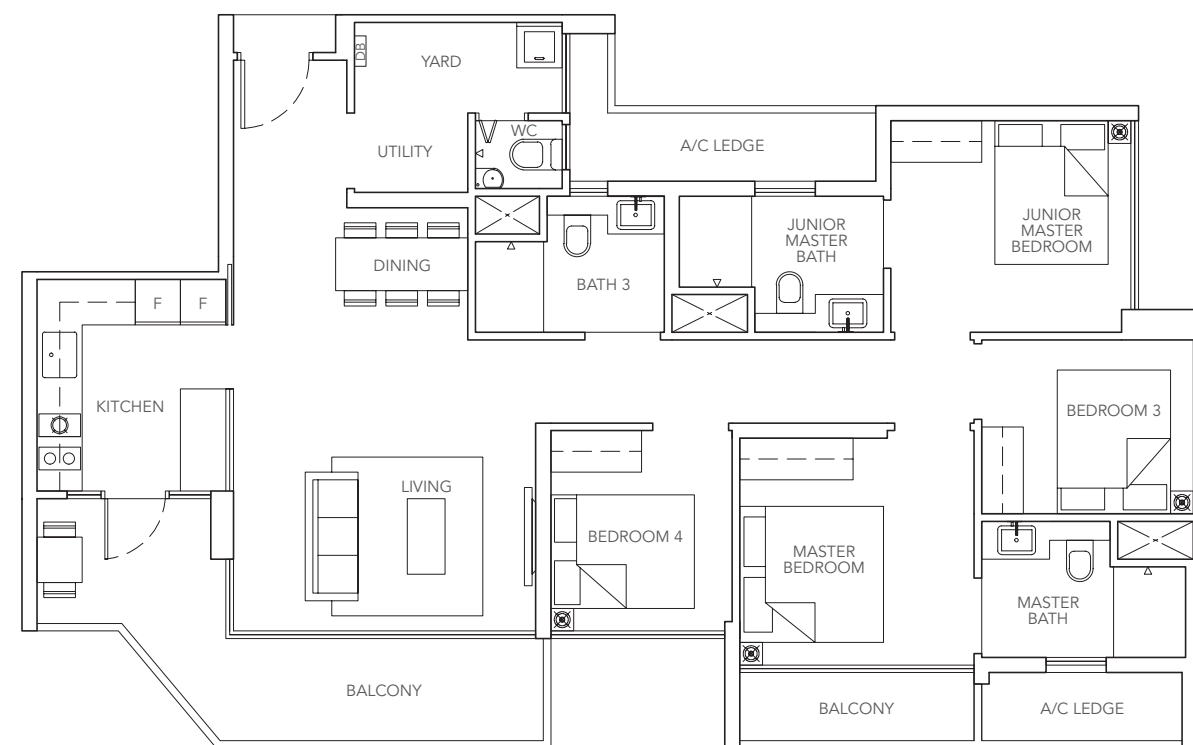
Area includes A/C ledge, balcony and void (where applicable). Some units are mirror images of the apartment plans shown in the brochure. Please refer to the key plans for orientation.
The plans are subject to change as may be approved by the relevant authorities. All floor areas are approximate measurements only and are subject to government resurvey.

D1

4-BEDROOM

121 sq m / 1302 sq ft

#03-08 to #28-08



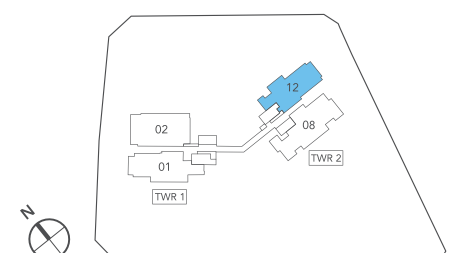
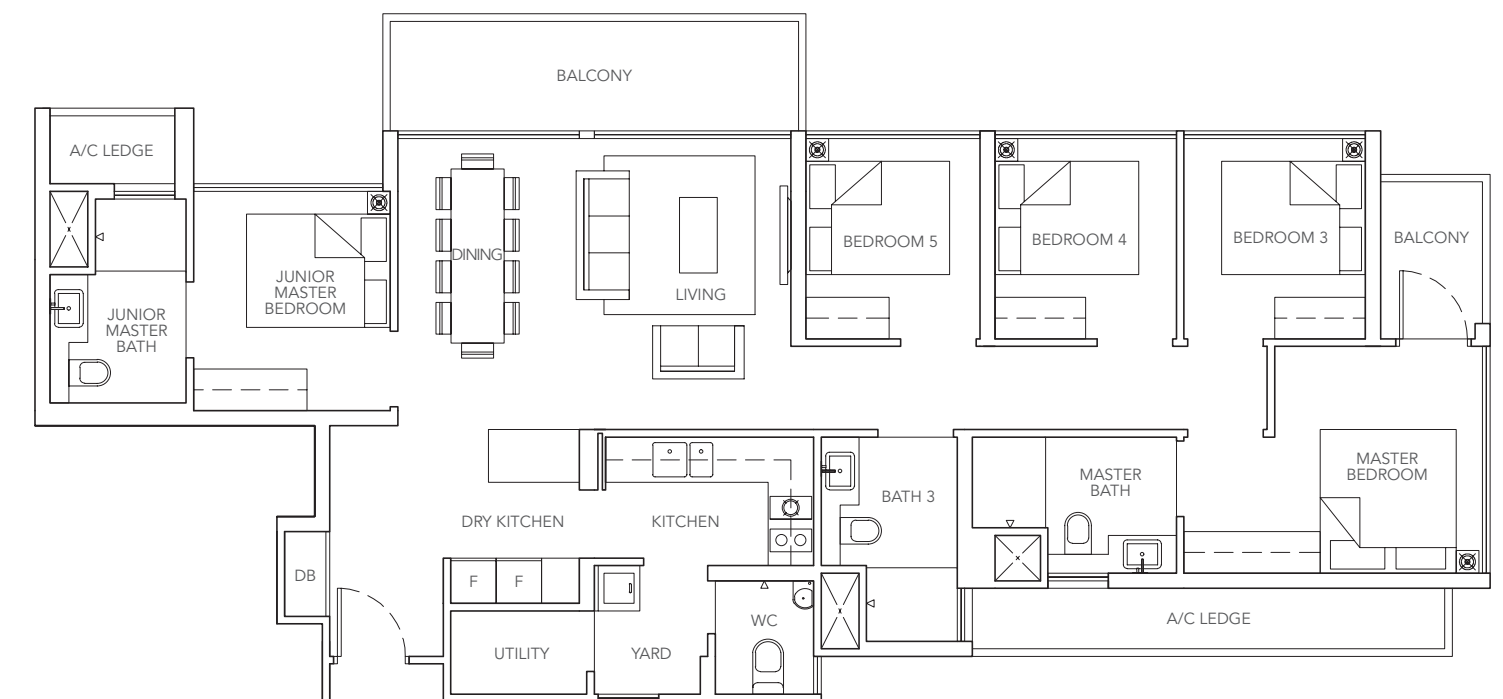
Area includes A/C ledge, balcony and void (where applicable). Some units are mirror images of the apartment plans shown in the brochure. Please refer to the key plans for orientation. The plans are subject to change as may be approved by the relevant authorities. All floor areas are approximate measurements only and are subject to government resurvey.

PH1

5-BEDROOM

130 sq m / 1399 sq ft

#29-12 to #30-12



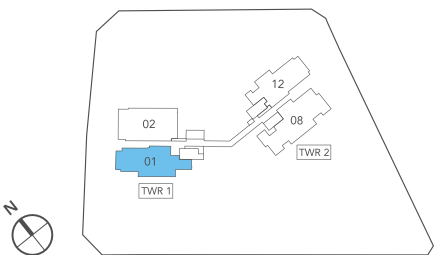
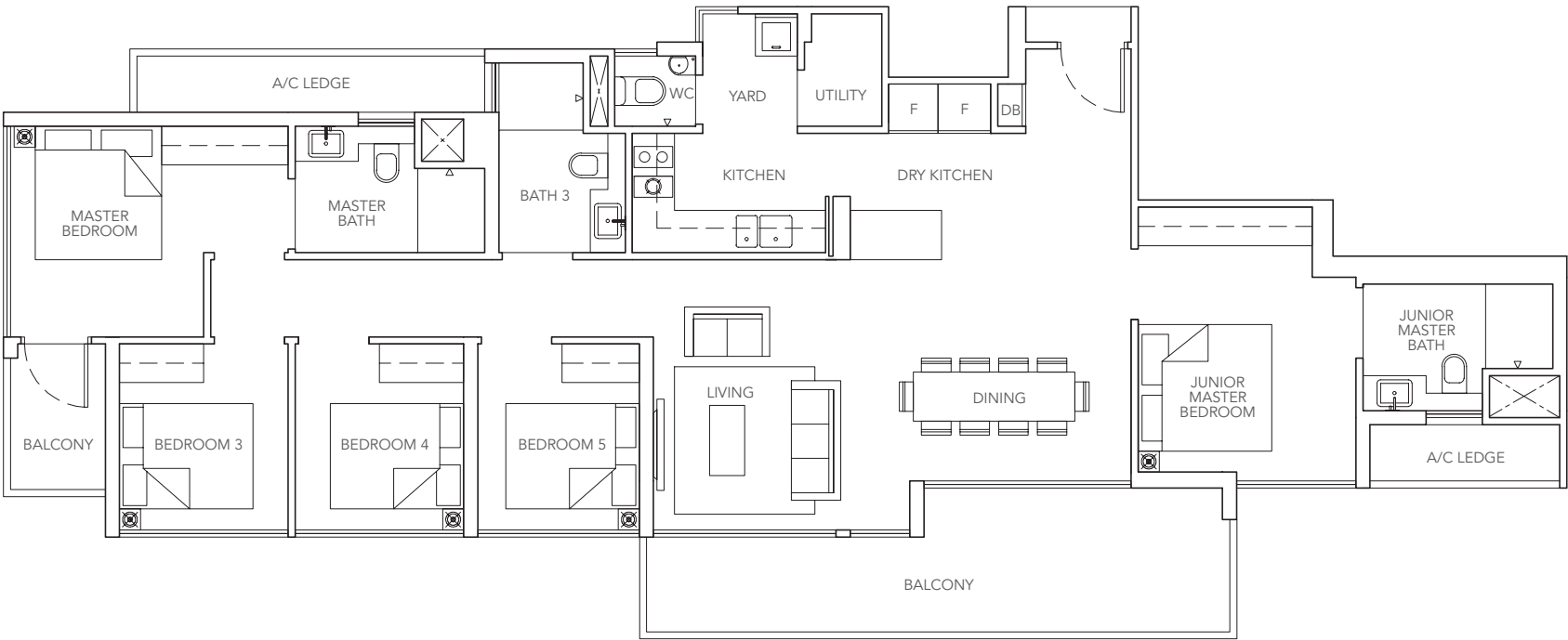
Area includes A/C ledge, balcony and void (where applicable). Some units are mirror images of the apartment plans shown in the brochure. Please refer to the key plans for orientation. The plans are subject to change as may be approved by the relevant authorities. All floor areas are approximate measurements only and are subject to government resurvey.

PH2

5-BEDROOM

144 sq m / 1550 sq ft

#29-01 to #30-01



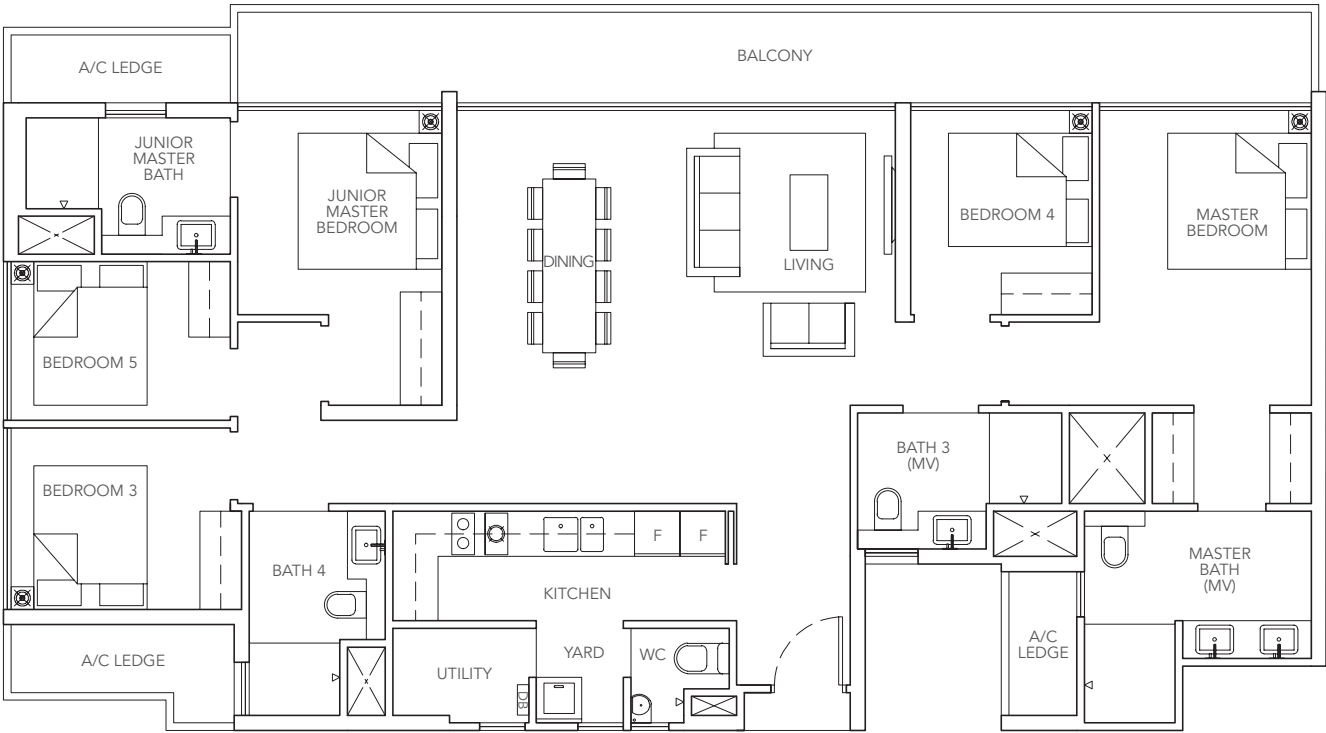
Area includes A/C ledge, balcony and void (where applicable). Some units are mirror images of the apartment plans shown in the brochure. Please refer to the key plans for orientation. The plans are subject to change as may be approved by the relevant authorities. All floor areas are approximate measurements only and are subject to government resurvey.

PH3

5-BEDROOM

155 sq m / 1668 sq ft

#29-02

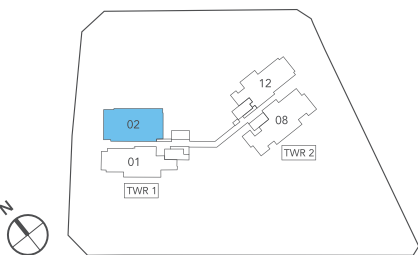
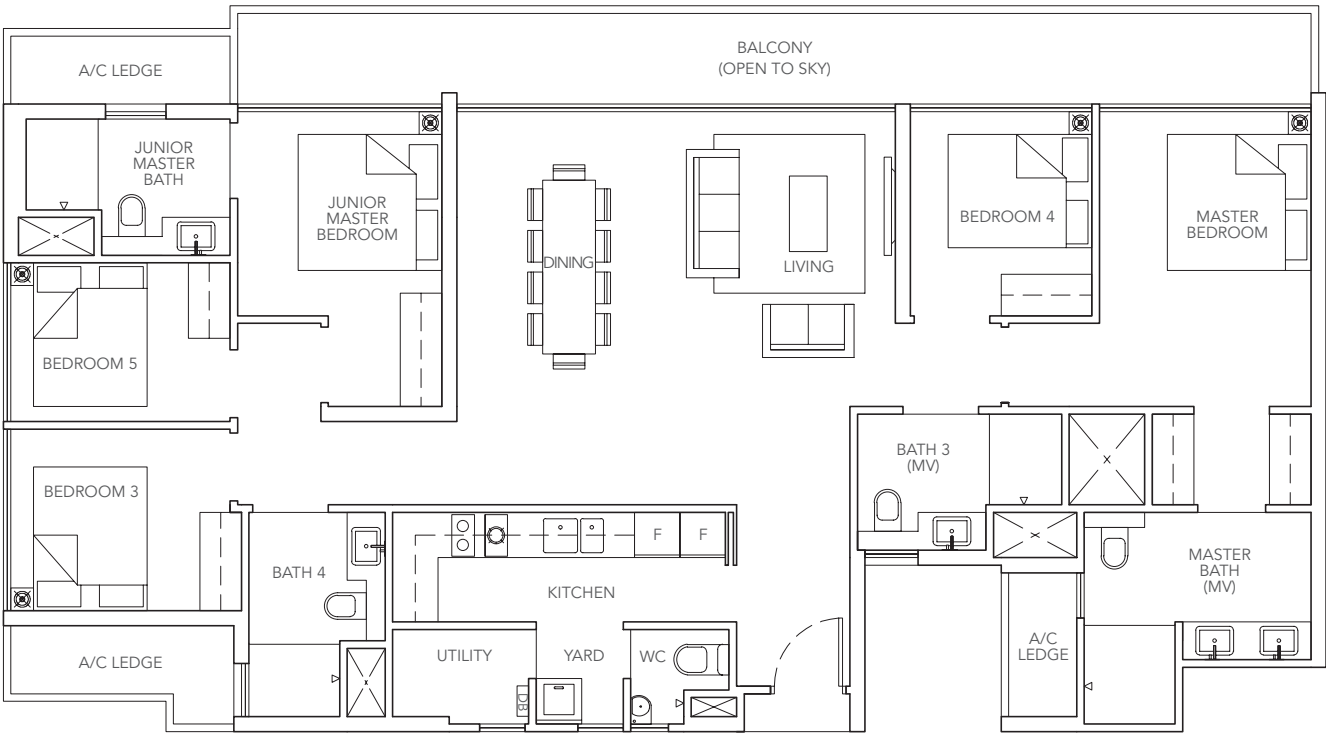


PH3

5-BEDROOM

155 sq m / 1668 sq ft

#30-02



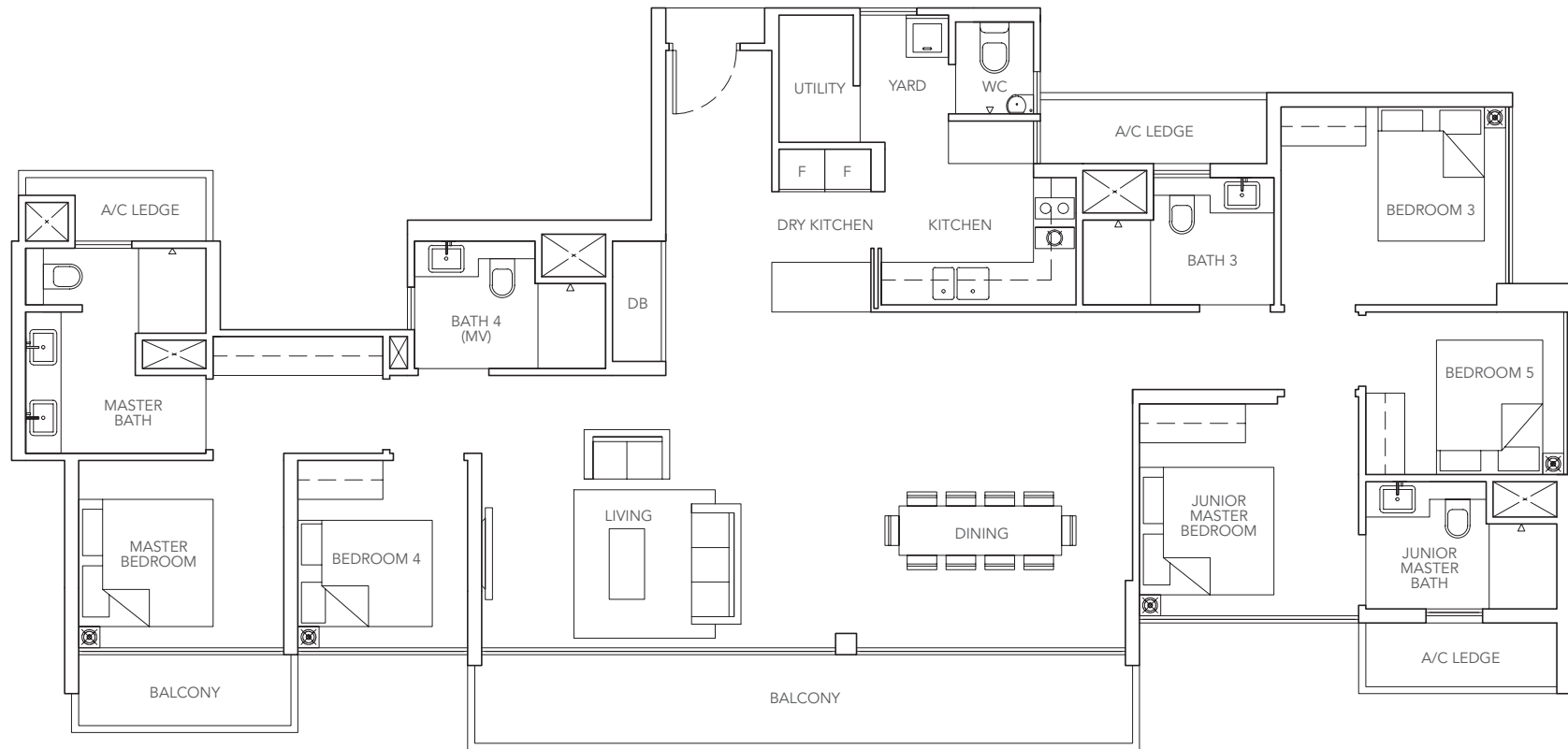
Area includes A/C ledge, balcony and void (where applicable). Some units are mirror images of the apartment plans shown in the brochure. Please refer to the key plans for orientation. The plans are subject to change as may be approved by the relevant authorities. All floor areas are approximate measurements only and are subject to government resurvey.

PH4

5-BEDROOM

170 sq m / 1830 sq ft

#29-08

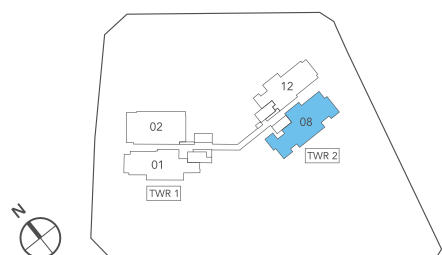
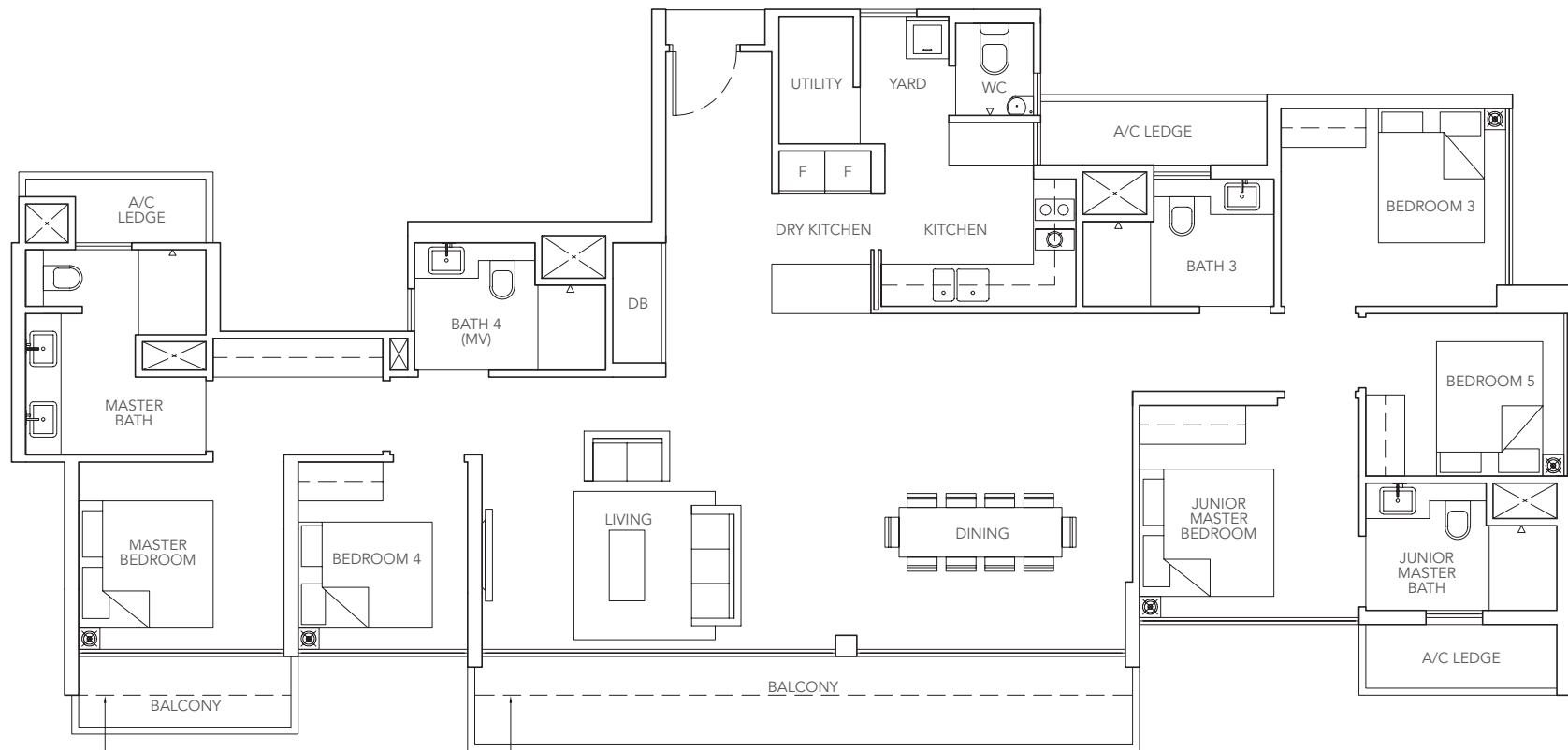


PH4

5-BEDROOM

170 sq m / 1830 sq ft

#30-08



Area includes A/C ledge, balcony and void (where applicable). Some units are mirror images of the apartment plans shown in the brochure. Please refer to the key plans for orientation.
The plans are subject to change as may be approved by the relevant authorities. All floor areas are approximate measurements only and are subject to government resurvey.

SPECIFICATIONS

- FOUNDATION**
Reinforced concrete bored piles and/or Reinforced concrete footings and/or Driven piles
- SUPERSTRUCTURE**
Reinforced concrete and/or Pre-Stress concrete and/or precast reinforced concrete and/or Structural steel to Engineer's design and specification
- WALLS**
 - External Wall: Reinforced concrete and/or light weight concrete panel and/ masonry walls and/or curtain wall system
 - Internal Wall: Reinforced concrete wall and/or light weight concrete panel/ blocks and/or pre-cast reinforced concrete wall and/or masonry walls and/or drywall partition system
- ROOF**
 - Reinforced concrete flat roof with appropriate waterproofing and insulation roofing system
 - Metal roof: metal roof with appropriate insulation
- CEILING**
Refer to Ceiling Height Schedule for the floor to ceiling height in the Unit
 - Apartment Unit**
 - Living/Dining/Bedrooms/Hallway to Bedroom/Balcony
 - Skim coat and/or plaster ceiling board and/or bulkhead to designated area with paint finish (where applicable)
 - Kitchen/Master Bathroom/Junior Master Bathroom/Common Bathroom/WC
 - Plaster ceiling board/or bulkhead to designated area (where applicable)
 - Common area**
 - Lift Lobbies/Corridors/Gymnasium/Handicap Toilet/Multi-Purpose Room
 - Plaster ceiling board and/or skim coat and/or bulkhead to designated area with paint finish (where applicable)
 - CarPark/Ramp/Staircase and Landing
 - Skim coat and/or bulkhead to designated area with paint finish (where applicable)
- FINISHES**
 - Wall**
 - Apartment Unit
 - Living/Dining/Bedrooms/Hallway to Bedrooms
 - Cement and sand plaster and/or skim coat with paint finish (up to false ceiling or at exposed surface only)
 - Master Bathroom/Junior Master Bathroom
 - Composite Marble or Compressed Marble (up to false ceiling height where applicable and no composite marble or compressed marble behind vanity cabinets and mirror where applicable)
 - Common Bathroom
 - Tiles (up to false ceiling height where applicable and no tiles behind vanity cabinets and mirror where applicable)
 - Kitchen
 - Tiles (up to false ceiling height where applicable and no tiles behind kitchen cabinets where applicable) and/or cement and sand plaster finish and/or skim coat with paint finish (up to false ceiling height where applicable)
 - Toilet/WC (where applicable)
 - Tiles (up to false ceiling height where applicable and no tiles behind mirror where applicable) and/or cement and sand plaster finish and/or skim coat with paint finish (up to false ceiling height where applicable)
 - Balcony
 - Cement and sand plaster and/or skim coat with paint finish (where applicable)
 - Utility Room/Yard
 - Cement and sand plaster and/or skim coat with paint finish (where applicable)
 - Common Area
 - Main Lift Lobbies (Basement 1 & 2 and 1st storey)
 - Stones and/or Tiles and/or cement and sand plaster and/or skim coat with paint finish
 - Typical Floor Lift Lobbies (2nd to 30th storey)
 - Cement and sand plaster and/or skim coat with paint finish
 - Common Corridors/Staircases and Carpark
 - Cement and sand plaster and/or skim coat with paint finish
 - All external walls including Balconies
 - Cement and sand plaster with spray textured and/or paint finishes
 - Floor**
 - Apartment Unit
 - Living/Dining/Kitchen/Hallway to Bedrooms/Study Corner (where applicable)
 - Compressed Marble with skirting
 - Master Bathroom/Junior Master Bathroom
 - Composite Marble or Compressed Marble
 - Common Bathroom/WC
 - Tiles
 - Bedrooms
 - Timber and/or Engineered timber-strips with skirting
 - Balcony
 - Tiles
 - Utility Room/Yard (where applicable)
 - Tiles with skirting
 - Air Con Ledge
 - Cement and sand screed
 - Common Area
 - Main Lift Lobby (Basement 1 & 2 and 1st storey)
 - Stones and/or Tiles
 - Typical Floor Lift Lobby (2nd to 30th storey)
 - Tiles

- Common Corridor
 - Tiles and/or cement and sand screed
 - Staircase
 - Cement and sand screed
- WINDOWS**
All windows of the units shall be powder coated finish aluminum frame with tinted and/or clear glass and/or frosted glass where appropriate to Architect's design and specification
 - DOORS**
 - Main Entrance
 - Approved fire-rated timber door complete with approved ironmongeries to Architect's design and specification
 - Bedrooms/Bathrooms
 - Hollow core timber swing door and/or sliding door complete with approved ironmongeries to Architect's design and specification
 - Kitchen
 - Timber and/or aluminum framed/frameless glass sliding door and/or swing door and/or pocket door and/or slide and fold door complete with approved ironmongeries to Architect's design and specification (where applicable)
 - WC
 - Swing door and/or slide and fold door complete with approved ironmongeries to Architect's design and specification (where applicable)
 - Balcony
 - Aluminum framed sliding and/or swing door and/or slide and fold door complete with approved ironmongeries to Architect's design and specification
 - SANITARY FITTINGS**
 - Master Bathroom/Junior Master Bathroom
 - One shower compartment complete with shower mixer set and shower set
 - One water closet
 - One vanity cabinet complete with basin and mixer
 - One mirror
 - One towel rail
 - One toilet paper holder
 - Common Bathrooms (where applicable)
 - One shower compartment complete with shower mixer and shower set
 - One water closet
 - One vanity cabinet complete with basin and mixer
 - One mirror
 - One towel rail
 - One toilet paper holder
 - WC (where applicable)
 - One water closet
 - One wash basin complete with tap
 - One shower set
 - One toilet paper holder
 - One mirror
 - ELECTRICAL INSTALLATION**
 - Electrical wiring below false ceiling within the units shall generally be concealed where possible. Electrical wiring above ceilings and main entrance corridor shall be in exposed trays and/or conduits and/or trunking
 - Type and number of lighting and power points refer to Electrical Schedule for details
 - TV/CABLE SERVICES/TELEPHONE POINTS**
Numbers of TV/Cable Services/Telephone points refer to Electrical Schedule for details
 - LIGHTNING PROTECTION**
Lightning Protection System shall be provided in accordance with Singapore Standard CP33 1996
 - PAINTING**
External Wall
 - Spray textured paint finish and/or emulsion paint to designated area
Internal Wall
 - Emulsion paint finish
 - WATER PROOFING**
Water proofing shall be provided to floors of Bathrooms, Kitchens, WC, Balcony
 - DRIVEWAY AND CARPARK**
Surface driveways and drop off area
 - Concrete/stone paver and/or tile and/or pre-mix and/or concrete floor and/or grass-cell paver
Basement Carpark and ramps to Basement
 - Reinforced concrete slab with hardener
 - LANDSCAPE/RECREATIONAL FACILITIES AND ELEMENTS**
Basement 1
 - Guard House
 - Entrance Courtyard
 - Entrance Water Feature
 - Side Gate
 - Shared Bicycle Bay @ Basement
 - Management Office @ Basement
 - Bin Centre @ Basement
 - Substation @ Basement
 - Outdoor Generator Set
1st Storey
 - Children's Play Zone
 - Dining Deck
 - Barbeque Pavilion
 - Spice Garden
 - Outdoor Shower
 - Relaxing Corner
 - Wading and Fun Pool
 - Street Soccer Court (Non-standard)
 - Basketball Court (Half Court)
 - Butterfly Garden
 - Teppanyaki Pavilion
 - Grill Pavilion

- 22) Sun Deck
23) Jacuzzi
24) Infinity Lap Pool (approx. 50m in length)
25) Communal Lounge
26) Reading Corner
27) Foot Reflexology Trail
28) Lush Landscape Garden
29) Changing Room
30) Seating Corner

2nd Storey

- 31) Multi-Purpose Room

14th Storey

- 32) Aerobic and Wellness Plaza
33) Outdoor Fitness Alcove
34) Indoor Gymnasium
35) Yoga Deck
36) TRX Exercise Corner
37) Aromatic Landscape Garden

19th Storey

- 38) Leisure Deck
39) Reflective Pool
40) Putting Green
41) Cozy Corner with Swing Bench
42) Hammock Corner
43) Seating Alcove
44) Evergreen Landscape Garden

29th Storey

- 45) Private Sky Lounge
46) Private Sky Dining
47) Private Sky Bar
48) Abloom Landscape Garden

17. ADDITIONAL ITEMS

- a) Kitchen
- Built-in kitchen cabinets with solid surface worktop complete with sink and mixer, cooker hood and hob
 - Built-in oven
 - Built-in integrated fridge
- b) Bedroom wardrobe
- Built-in wardrobe with laminate/veneer/glass to Architect's design and specification
- c) Air-Conditioning
- Wall mounted fan coil unit air-conditioning system to Living/Dining and Bedrooms to Engineer's design and specification
- d) Water heater
- Hot water supply shall be provided to all Bathrooms and Kitchen
- e) Security System
- Audio Video Intercom System to Unit
 - Security Card Access Control System to Lift, Gyms and Pedestrian Side Gates
 - Carpark Barrier System at main entrance will be provided
 - Closed Circuit Television System (CCTV) surveillance to 1st storey lift lobby and designated common areas

NOTE:

Marble/Compressed Marble/Limestone/Granite

Marble/compressed marble/limestone/granite are natural stone materials containing veins with tonality differences. There will be colour and markings caused by their complex mineral composition and incorporated impurities. While such materials can be pre-selected before installation, this non-conformity in the marble/compressed marble/limestone/granite as well as non-uniformity between pieces cannot be totally avoided. Granite tiles are pre-polished before laying and care has been taken for their installation. However, granite, being a much harder material than marble, cannot be re-polished after installation. Hence, some differences may be felt at the joints. Subject to clause 14.3, the tonality and pattern of the marble, limestone or granite selected and installed shall be subject to availability.

Timber-strips

Timber strips are natural materials containing veins and tonal differences. Thus, it is not possible to achieve total consistency of colour and grain in their selection and installation. Timber strips are also subject to thermal expansion and contraction beyond the control of builder and Vendor. Natural timber that is used outdoors will become bleached due to sunlight and rain. Thus, the cycle of maintenance on staining will need to be increased as required. Notwithstanding this note, the Vendor shall remain fully responsible for the performance of its obligations under clause 9 and clause 17.

ELECTRICAL SCHEDULE

Unit Type	Lighting Point	Power Point	Aircon Point	TV Point	Telephone Point	Water Heater	Cooker Hob	Cooker Hood	Fridge Point	Washing Machine Point	Audio Video Intercom Point	Bell Point
Type A1	6	7	1	2	2	1	1	1	1	1	1	1
Type A2	6	7	1	2	2	1	1	1	1	1	1	1
Type B1	8	9	2	3	3	1	1	1	1	1	1	1
Type B2	8	9	2	3	3	2	1	1	1	1	1	1
Type B2a	8	9	2	3	3	2	1	1	1	1	1	1
Type B3	10	10	2	4	4	2	1	1	1	1	1	1
Type C1	13	12	2	4	4	2	1	1	2	1	1	1
Type C2	14	12	2	4	4	2	1	1	2	1	1	1
Type C3	14	12	2	4	4	2	1	1	2	1	1	1
Type C3a	14	12	2	4	4	2	1	1	2	1	1	1
Type D1	16	15	3	5	5	3	1	1	2	1	1	1
Type PH 1	21	18	4	6	6	3	1	1	2	1	1	1
Type PH 2	21	18	4	6	6	3	1	1	2	1	1	1
Type PH 3	23	18	4	6	6	3	1	1	2	1	1	1
Type PH 4	24	18	4	6	6	3	1	1	2	1	1	1

NOTE :

- 1) ALL ISOLATORS FOR CU ARE SUBJECTED TO A/C EQUIPMENT CONFIGURATION.

Air-Conditioning System

To ensure good working condition of the air-conditioning system, the system has to be maintained and cleaned on a regular basis by the Purchaser. This includes the cleaning of filters, clearing of condensate pipes and charging of gas. The Purchaser is advised to engage his/her own contractor to service the air-conditioning system regularly.

Television and/or Internet Access

The Purchaser is liable to pay annual fee, subscription fee and such other fees to the television and/or internet service providers or any other relevant party or any relevant authorities. The Vendor is not responsible to make arrangements with any of the said parties for the service connection for their respective channels and/or internet access.

Materials, Fittings, Equipment, Finishes, Installations and Appliances

Subject to Clause 14.3, the brand, colour and model as specified for all materials, fittings, equipment, finishes, installations and appliances to be supplied shall be provided subject to the qualified person's selection and market availability.

Layout/Location of Fan Coil Units, Electrical Points, Television Points, Telecommunication Points, Audio Video Intercom System, Door Swing Positions and Plaster Ceiling Boards

Layout/Location of fan coil units, electrical points, television points, telecommunication points, audio video intercom system, door swing positions and plaster ceiling boards are subject to the qualified person's final decision and design.

Warranties

Where warranties are given by the manufacturers and/or contractors and/or suppliers of any of the equipment and/or appliances installed by the Vendor at the Unit, the Vendor will assign to the Purchaser such warranties at the time when vacant possession of the Unit is delivered to the Purchaser. Notwithstanding this assignment, the Vendor shall remain fully responsible for the performance of its obligations under clause 9 and clause 17.

False Ceiling

The false ceiling space provision allows for the optimal function and installation of M&E services. Access panels are allocated for ease of maintenance access to concealed M&E equipment for regular cleaning purposes. Where removal of equipment is needed, ceiling works will be required. Location of false ceiling is subject to the qualified person's sole discretion and final design.

Glass

Glass is manufactured material that is not 100% pure. Invisible nickel sulphide impurities may cause spontaneous glass breakage, which may occur in all glass by all manufacturers. The Purchaser is recommended to take up home insurance covering glass breakage to cover this possible event. Notwithstanding this note, the Vendor shall remain fully responsible for the performance of its obligations under clause 9 and clause 17.

Mechanical Ventilation System

Mechanical ventilation fans and ducting are provided to toilets which are not naturally ventilated.

To ensure good working condition of the mechanical ventilation system, the mechanical ventilation system for the exhaust system within internal toilets (where applicable) is to be maintained by the Purchaser on a regular basis.

Wall

All wall finishes shall be terminated at false ceiling level. There will be no tiles/stone works behind kitchen cabinets/vanity cabinet/mirror.

Prefabricated Toilets/Prefabricated Bathrooms

Certain master bathroom, bathroom and W.C. may be prefabricated construction and all penetrations are sealed at manufacturer's factory prior to installation on site. Any subsequent penetrations are not recommended as they will compromise the waterproofing warranty.

Tiles

Selected tile sizes and tile surface flatness cannot be perfect and are subject to acceptable range described in Singapore Standards SS483:2000.

Mobile Phone Reception

Telephone reception on mobile phones within the Housing Project is subject to availability/provision of satellite/wireless coverage by the respective mobile telephone network service providers and is not within the purview/control of the Vendor.

Cable Services

The Vendor shall endeavor to procure a service provider for cable television and/or internet services (the "Cable Services") to provide the necessary cabling or connection from its network to the Unit/Building and/or the Housing Project (or any part of parts thereof), so as to enable the Unit/Building and/or the Housing Project to receive the Cable Services. In the event despite reasonable efforts being made by the Vendor, the Vendor is unable to procure any service provider to provide the said cabling or connection, thereby resulting in there being no Cable Service available in the Unit/Building and/or the Housing Project, the Vendor shall not be liable to the Purchaser for any compensation or for any damages, costs, fees, expenses or losses whatsoever, or howsoever incurred by virtue of the Purchaser being unable to obtain the Cable Services in the Unit/Building and/or the Housing Project.

THE DEVELOPERS

SUSTAINED LAND PTE LTD



Sea Horizon



Tre Residences



Regent Residences

Since its inception in 2006, Sustained Land's unwavering mission is to develop homes that are not only functional but exude style, quality and sophistication. It has since developed more than 2500 residential units, affirming its reputation as one of Singapore's premier property developers. Sturdee Residences joins Sustained Land's repertoire of iconic residential property projects which include Tre Residences, The Poiz, Sea Horizon, Coastal Breeze Residences, 833 MB Residences, Tivoli Grande, The Line, 38 iSuites, Regent Residences and 8M Residences. Headquartered in Singapore, Sustained Land has subsidiaries, joint ventures and associates serving a broad spectrum of customers.



38 iSuites



The Poiz

HO LEE GROUP

The Ho Lee Group was incorporated in 1996 with the convergence of businesses ranging from general building construction to specialized metal works, formwork fabrication and sales and rental of construction machines and equipment. From its inception in 1996, HLG went on to acquire Wee Poh Construction Co. (Pte) Ltd (WPC) in 2005 which is a civil engineering construction company graded by the Building Construction Authority of Singapore (BCA) with an A1 grading. The Group also acquired Liang Huat Aluminium Ltd in 2007, an Aluminium and Curtain Wall Specialist listed on the Main Board of the Stocks Exchange of Singapore (SGX). The Group also expanded with the development of commercial and residential properties and has to date a varied portfolio of properties comprising the Built-to-Order Mauser Factory in Tuas, Singapore, The Watercolours Executive Condominium, The Heron Bay Executive Condominium, to name a few.



Lake Life



Heron Bay



Watercolours



The Bently Residences @ Kovan



OneRobey



Royce Residences



Suites @ Topaz



The Citron & The Citron Residences

GOODLAND GROUP

The Goodland Group is a Singapore-based premier lifestyle property developer established in 1993. The Singapore main-board listed Group prides itself for building quality, signature, and environment friendly developments. Its extensive range of property portfolio includes residential projects, commercial and industrial developments in Singapore, Malaysia and Cambodia which include among others The Shoreline Residences I & II, Suites @ Topaz, Royce Residences, OneRobey and Vibes @ East Coast, The Citron & The Citron Residences, The Morris Residences and The Bently Residences @ Kovan in Singapore.

KWONG LEE LAND

Kwong Lee Land is the property arm of Kwong Lee Engineering. Started in 1969, Kwong Lee Engineering has established itself as Singapore's biggest and most trusted spiral steel pipe manufacturer. We are proud to have contributed to Singapore's progress by supplying a large part of Singapore's water transmission mains. We are committed to continue playing a key role in support of the efficient management of Singapore's precious water resources.

JOINTLY DEVELOPED BY:



Sustained Land Pte Ltd



Ho Lee Group



GOODLAND GROUP



KWONG LEE

Disclaimer:

While every reasonable care has been taken in preparing this brochure, the developer and its agent cannot be held responsible for any inaccuracies. All statements, specifications and plans are believed to be correct but are not regarded as statements or representations of fact. All information and specifications are current at the time of print and are subject to change as may be required and cannot form part of the contract. All floor plans are subject to any amendments approved or which may be approved by relevant authority. Renderings and illustrations are artist's impressions only and photographs are only decor suggestions and do not necessarily represent as-built standard specifications and none can be regarded as representations of fact. Floor areas are approximate measurements and are subject to final survey. The materials and finishing to be used are subject to changes and availability. The model and the showflat are subject to changes as may be required or approved by the relevant authorities.

Developer: SL CAPITAL (1) PTE LTD • Company Registration Number: 201504344E • Developer's Licence No: C1193 • Tenure of Land: 99 Years
Commencing from 29 June 2015 • Expected Date of Vacant Possession: 30 June 2020 • Expected Date of Legal Completion: 30 June 2023
• Lot & Mukim No.: 2639W TS17 • Building Plan No.: A1698-00486-2015-BP02 dated 11 March 2016
• Encumbrances: Mortgage registered in favour of Malayan Banking Berhad



